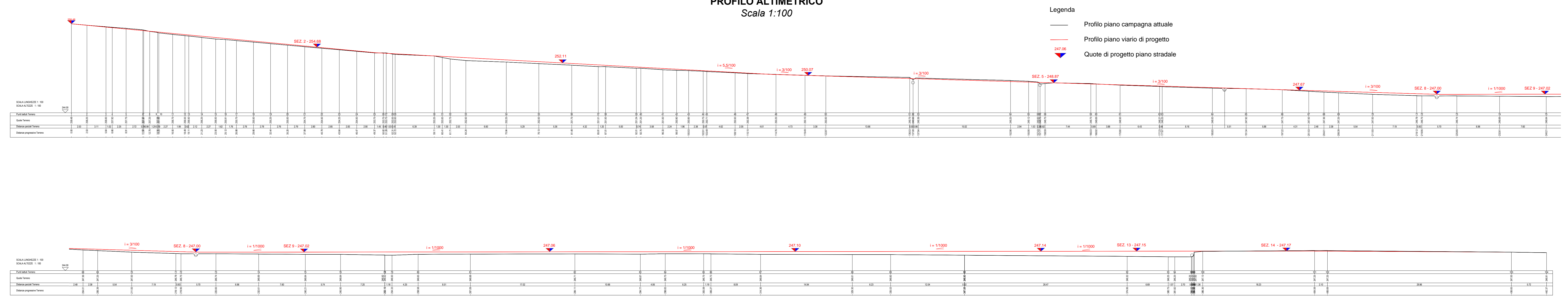
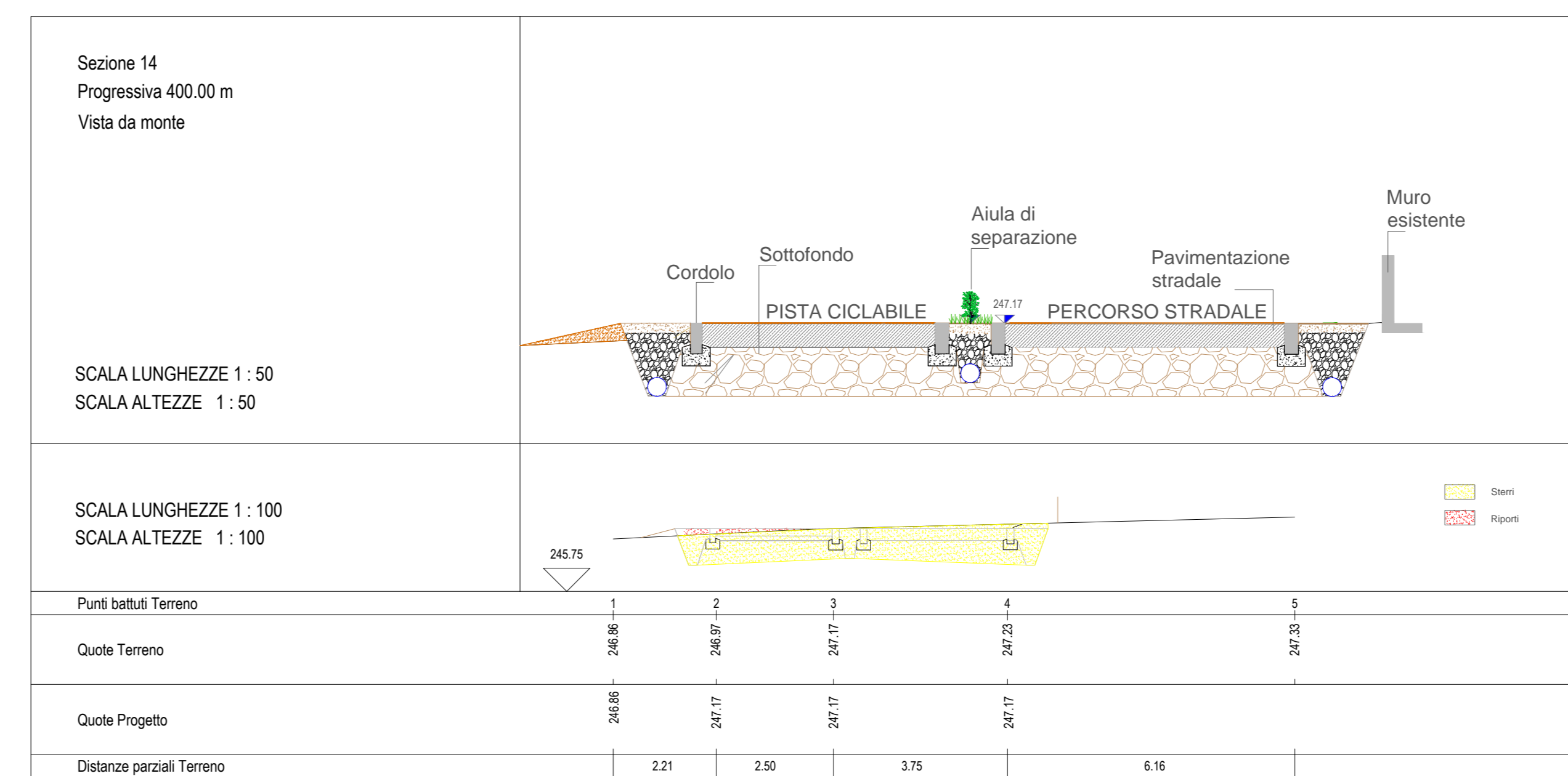
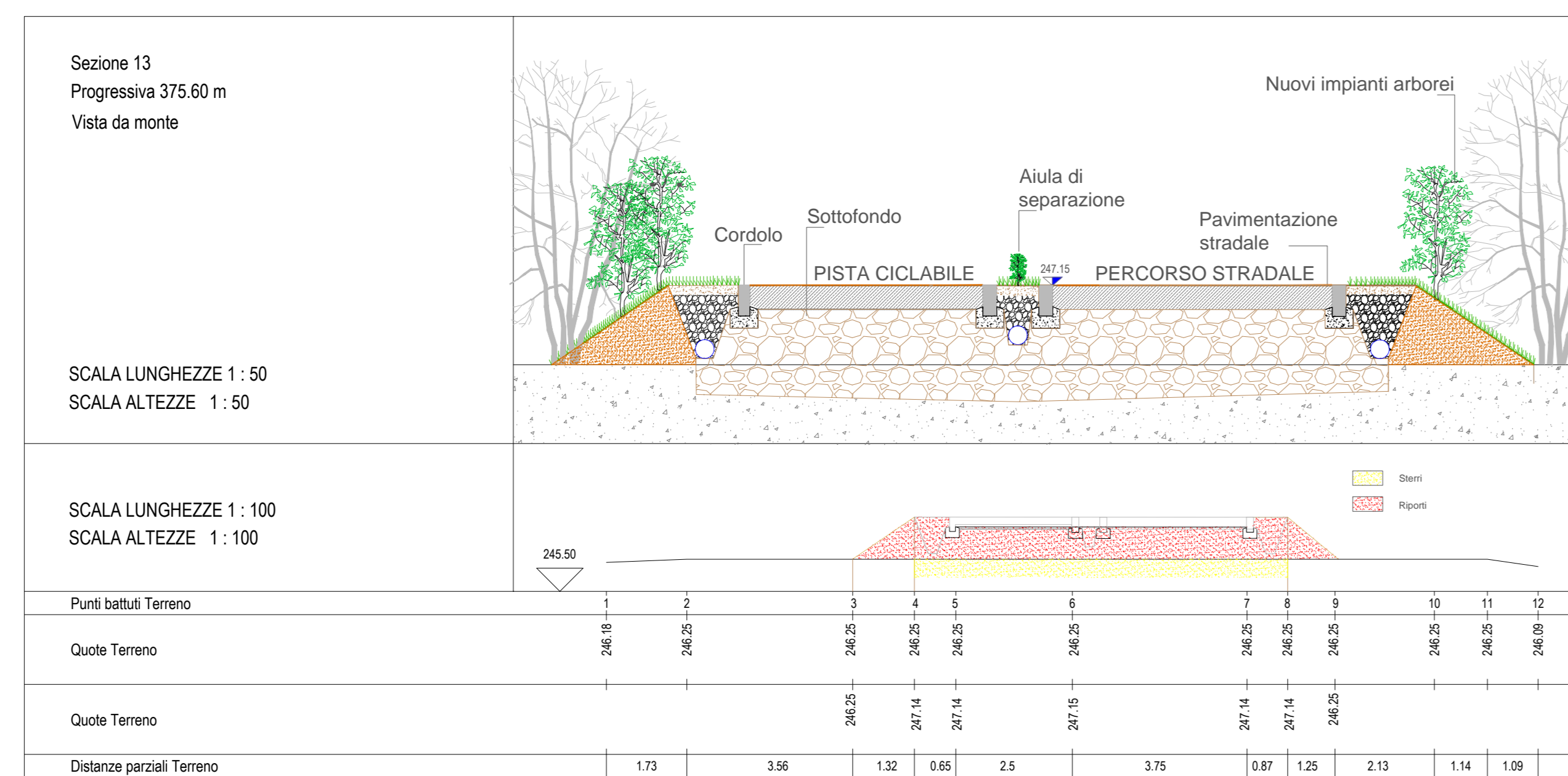
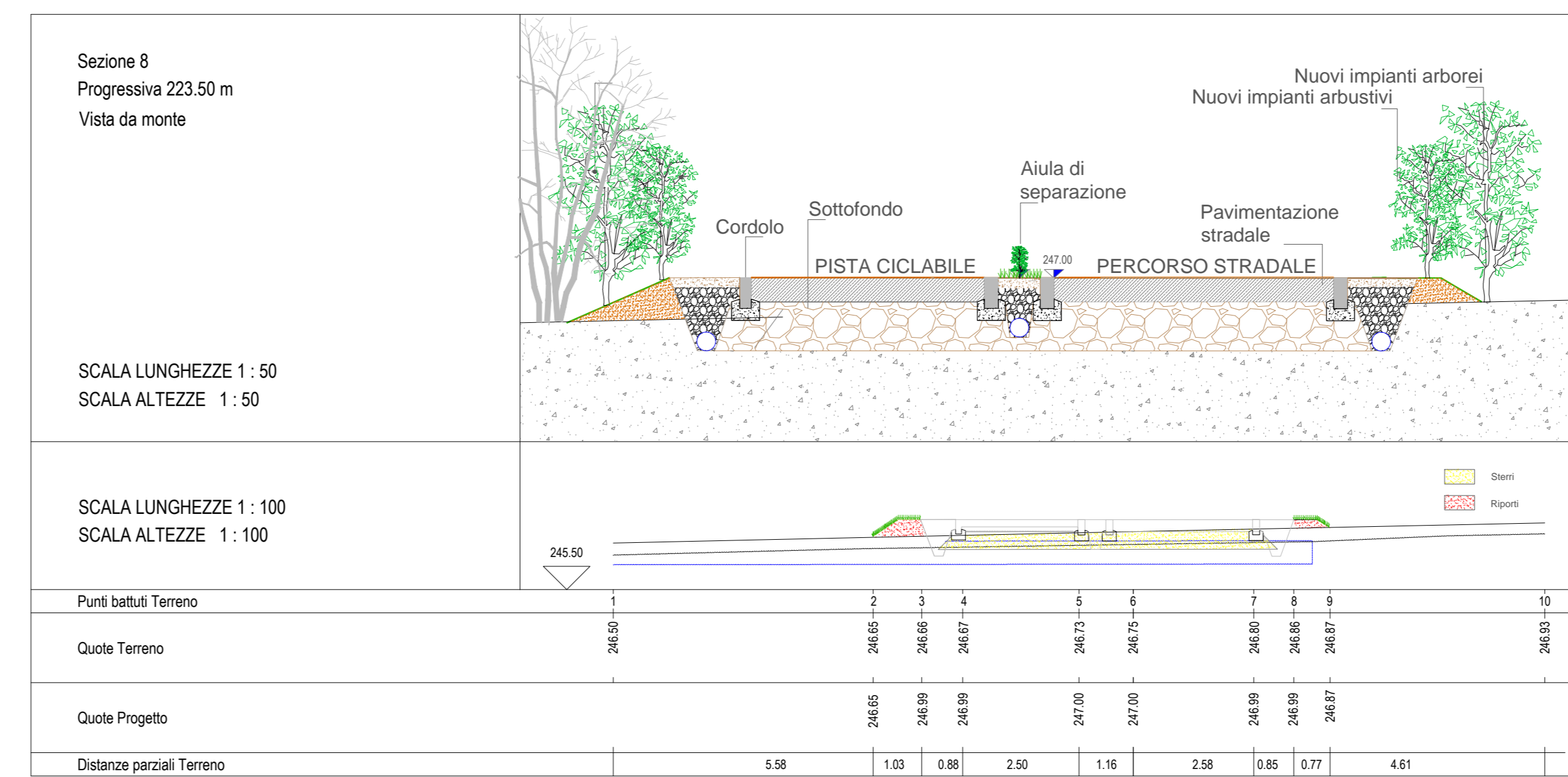
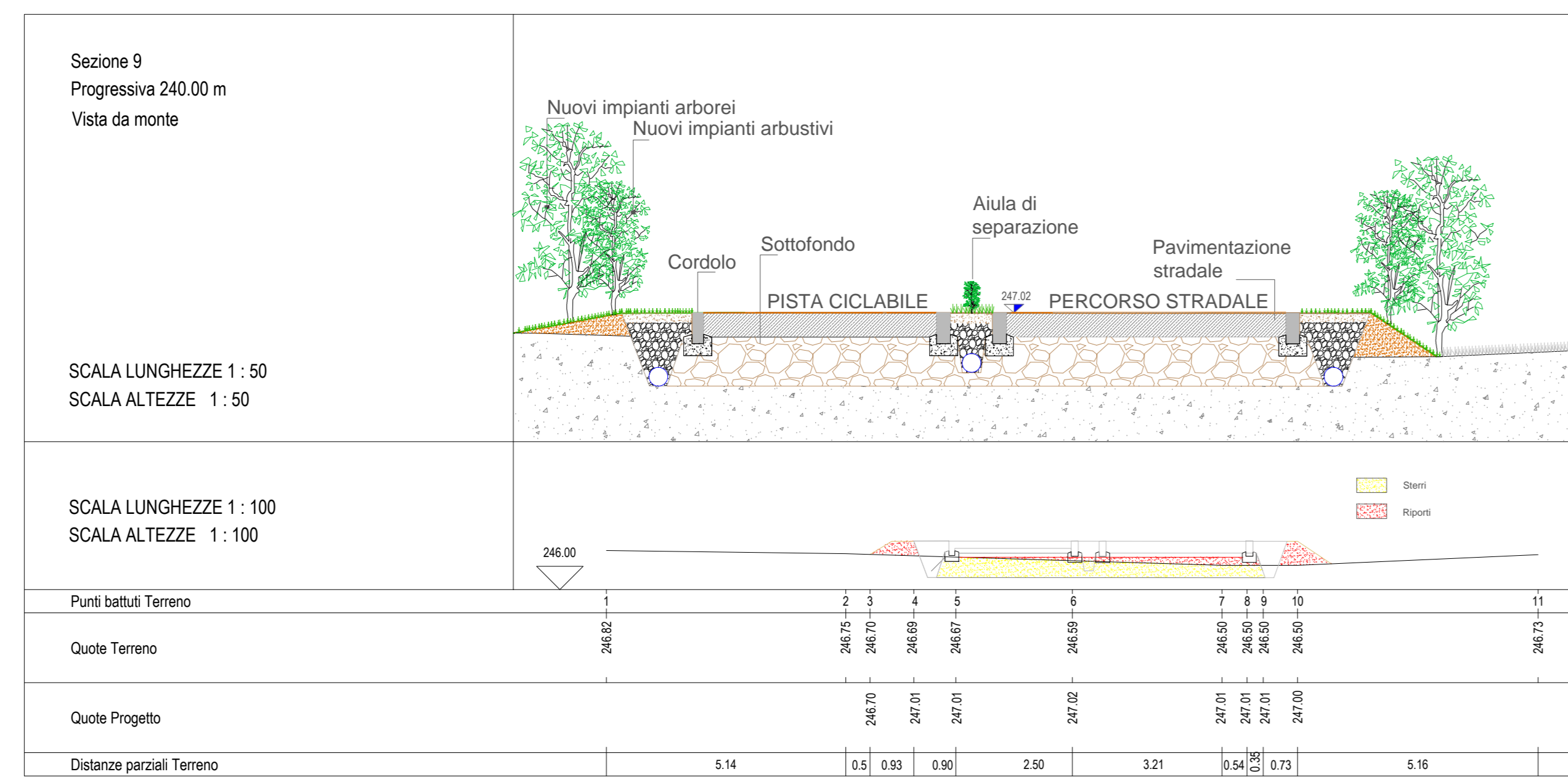
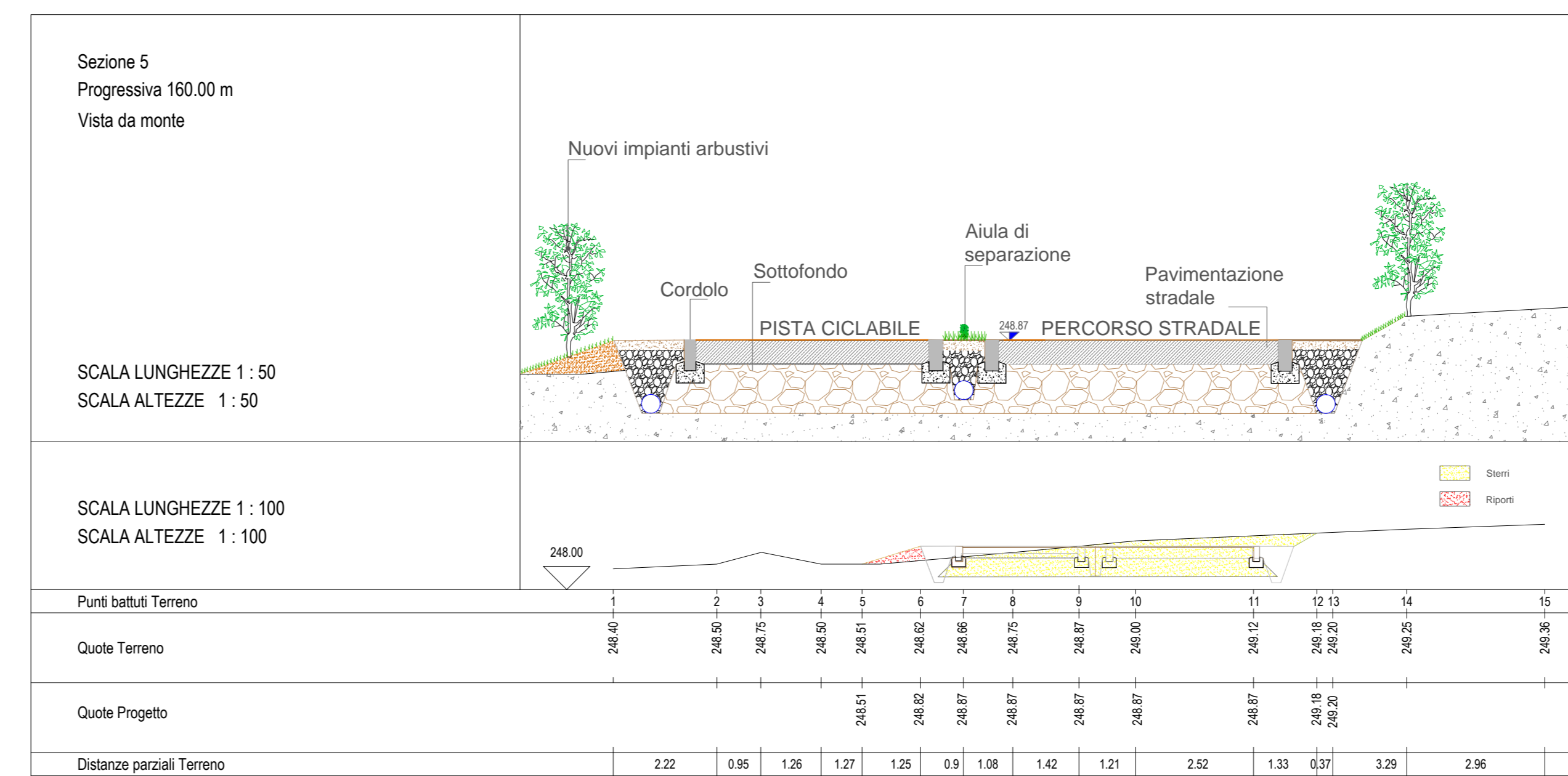
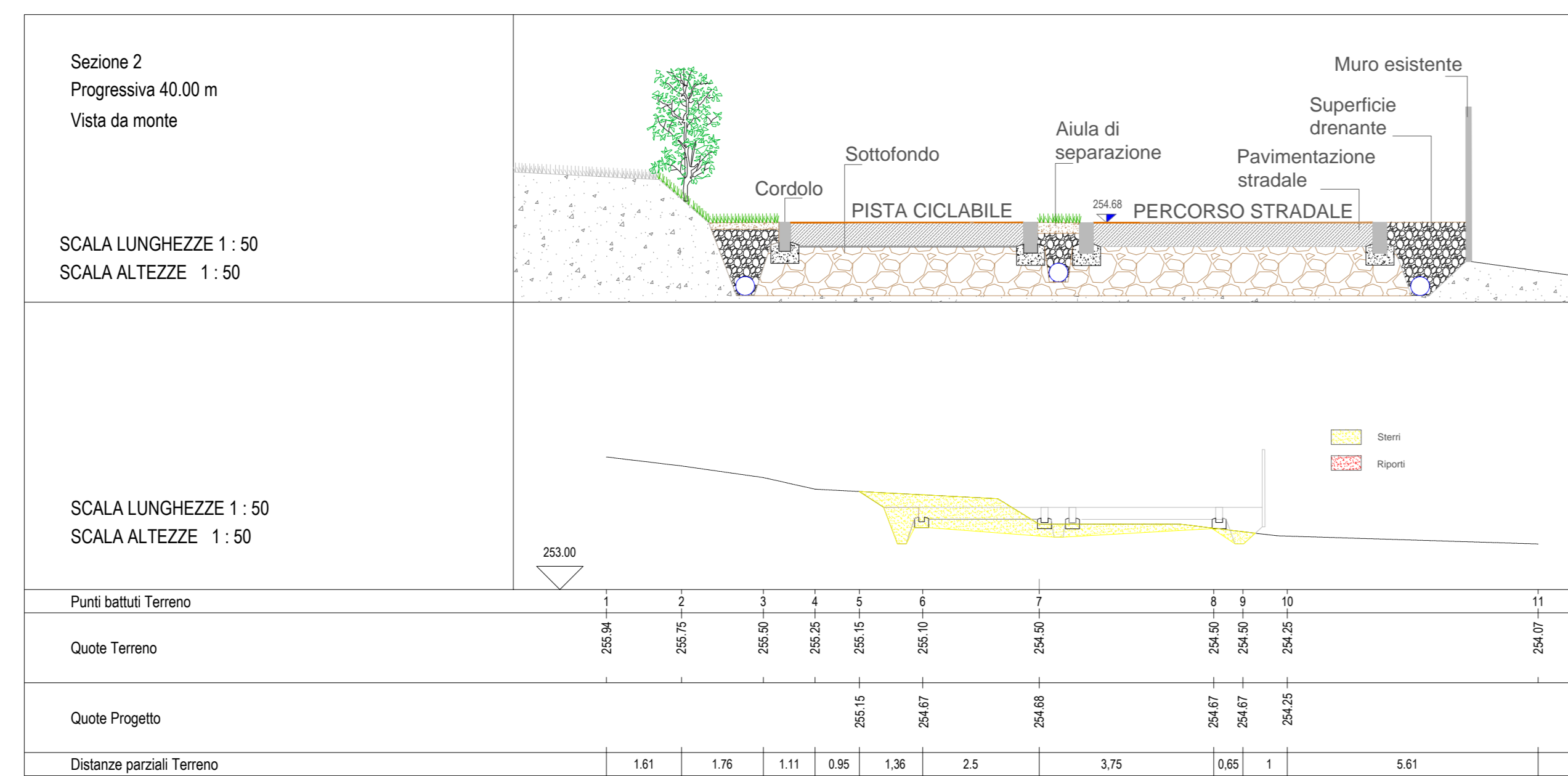


PROFILO ALTIMETRICO
Scala 1:100



SEZIONI TRASVERSALI
Scala 1:50



tecnico incaricato		committente	
ING. ANTONINO BAI		Comune di Caravate	
incarico	TAVOLA	prat.	
Realizzazione di nuova pista ciclopedonale e sede viaria in Comune di Caravate (VA).	3	568/17	
PROGETTO DEFINITIVO		scala	1:50
particolare		data	1:100
INTERVENTI IN PROGETTO: profilo altimetrico e sezioni		dis. CC	FEB. 2018
STUDIO DI INGEGNERIA - Ing. Antonino Bai via IV Novembre, 9 - 21106 Gavirate (VA) Tel. 0332745463 Fax 0332735805 E-mail ambiente@ingprogbai.it			